

LACROSSE

by PIPER



REFERENCE GUIDE

DEAR VALUED CUSTOMER:

Thank you for choosing LaCrosse Cooler Company for your underbar needs. For over 60 years, LaCrosse has been recognized by the food service industry for its quality equipment, quick delivery, and modest pricing. Our flexibility and attention to detail ensure that you receive a piece of equipment that meets your specific needs and our use of quality materials ensure that your equipment will last.

We welcome your suggestions or comments. Please call us toll free at 1-800-544-3057.

Lacrosse Underbar Equipment



Product/Item	Page
Terms and Conditions	II
Warranty	III
Easy Installation	IV
General Information	V
Using This Price Book	VI
Ice Chests	1
Mixing Stations	2
Pass Thrus and Overshelves	4
Sinks	5
Cabinets	6
Glass Racks	7
Bottle Storage	8
Beer Storage	10
Add-Ons	11
Drainboards and Drink Rails	14
Filler Sections, Chases, and Soda Gun Holders	15
Drop-In Ice Chests	16
Drop-In Sinks	17
Shelves	17
The StowAway® Portable Bar	18
Accessories	19
Custom Configurations	20
Factory CAD Drawings	21
Bar Layout Examples	22

Important Cleaning Information

1. Use only soft cloths or plastic scouring pads.
2. Do not use steel wool pads, wire brushes or scrapers.
3. Use Alkaline, Alkaline Chlorinated or Non-Chloride cleaning agents that are recommended for use with Stainless Steel.
4. Do not use cleaning agents containing Chlorides or Quaternary Salts.
5. Rinse thoroughly with water and wipe dry after using any cleaning agents.
 - Never use Hydrochloric Acid (Muriatic Acid).
 - Never soak dirty rags, leave foreign matter or cleaning agents in bowl or on equipment overnight.
6. Failures caused by product misuse or wrongful cleaning practices will void warranty.



Terms and Conditions

Prices:

All merchandise will be billed at our current published prices in effect.

Performance:

All shipping estimates are made with the expectation that shipment will go forward as specified. However, fulfillment is always subject to availability of material and to conditions affecting shipment that are beyond our control. We shall not be held liable for any delay in performance due to reasons beyond our control.

Shortages:

Claims for shortage must be brought to our attention within five (5) days of receipt, and must be noted upon receipt with the carrier.

Cancellations:

Cancellations are not accepted on orders once production has begun. No cancellations are accepted on custom jobs. Approved cancellations will be subject to a minimum 15% restocking charge.

Returns:

No merchandise will be accepted without written authorization from LaCrosse.

Only product that can be applied to current orders will be approved for return. Once authorization is received, merchandise must be returned within thirty (30) days or credit will not be issued.

Merchandise being returned must be shipped PREPAID and is subject to a minimum 25% handling charge. Refurbishing charges extra. Return authorization number or form must accompany carton.

Custom:

Orders that are custom or require alterations are subject to a down payment. Down payments must be received before work will begin.

Prints and Drawings:

All drawings submitted with orders will be accepted as correct and processed in the order they were received. Errors arising from drawings submitted will be the responsibility of the customer. No cancellations accepted on orders for merchandise built to your specifications. LaCrosse has a tolerance of +/- 1/8” on all drawing measurements due variance in manufacturing processes.

Concealed Damages:

When unpacking merchandise and finding damage, customer must call carrier without further unpacking; have them file a report of concealed damage. Customer must then file a claim with the carrier at once. If containers show rough handling, do not give carrier a clear receipt.

Order Approval:

All orders are subject to final approval by the factory. Acceptance and/or performance is subject to the approval of our credit department. Minimum order \$25.00 list.

Order Acknowledgements:

An order acknowledgement is sent for every order we receive. Please review this acknowledgement carefully. It is the customer’s responsibility to verify all information and notify us immediately of any errors. The acknowledgement will include the anticipated shipping date based on the date the order was received.

Shipping:

Freight is F.O.B. factory, net prices subject to any sales or other tax which might be imposed and to the terms and conditions in effect when shipped. The right is reserved to change prices without notice. Payable in U.S. funds. All prices net thirty (30) days to credit qualified dealers. F.O.B. Wausau, WI.

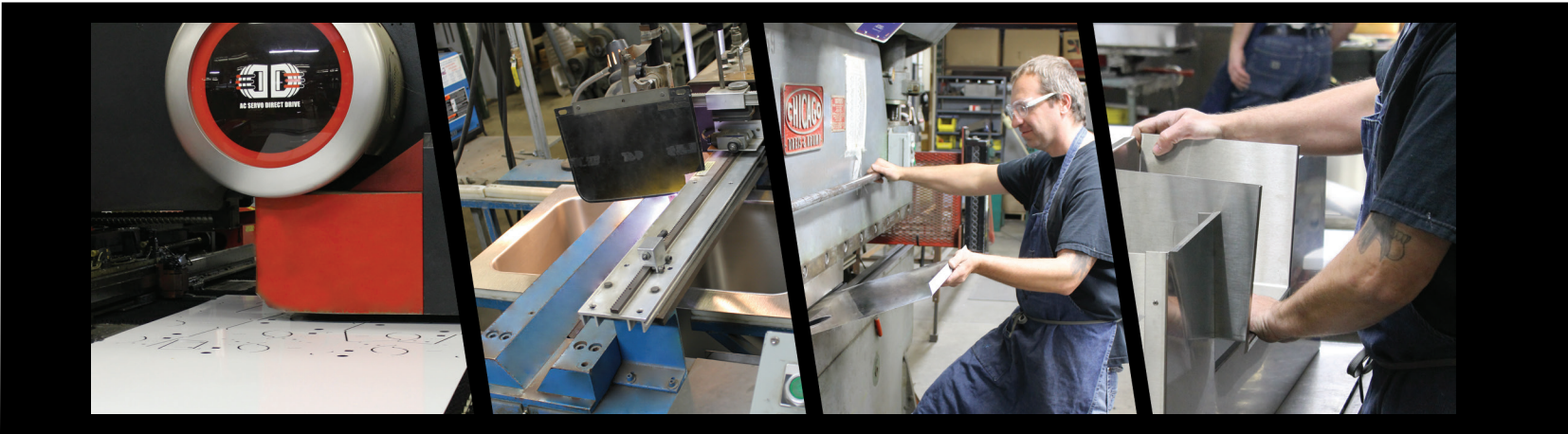
Limited Warranty

LaCrosse extends a limited warranty to the original user on the products it manufactures. All products are under warranty to be free of original defects, material or workmanship, under normal use and service for a period of one (1) year from date of shipment. Proof of purchase must accompany all warranty claims. Parts will be replaced or repaired at the company’s option on a no-charge basis (except for labor). Inspection by and at the LaCrosse factory, of parts claimed defective, shall be final in determining warranty status. The manufacturer is not responsible for any damage or business loss of any kind resulting from a defect in the unit, or for any charges related to the removal of a defective unit or installation of a replacement unit.

This warranty shall be considered VOID if: the unit is installed by someone other than a licensed plumber or not in accordance with local code; the unit is altered or modified; the unit has any accessory parts attached which are not recommended or installed by the manufacturer; THE UNIT IS CLEANED With CHEMICALS OR DETERGENTS NOT IN ACCORDANCE With THE MANUFACTURER’S DIRECTIONS OR NOT RECOMMENDED FOR USE ON STAINLESS STEEL.

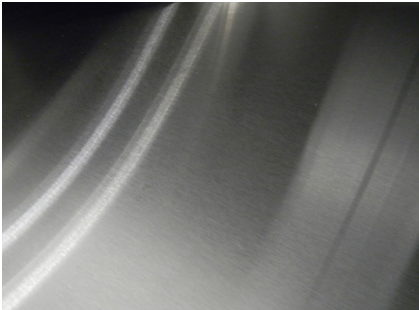
EXCLUSIVE REMEDY. If the goods purchased in connection with this document are returned by Purchaser FOB, LaCrosse’s Onalaska plant pursuant to written authorization and instructions from LaCrosse within the applicable warranty period set forth above and such goods are found to be defective by LaCrosse under one of the applicable foregoing Limited Warranties, LaCrosse will at its sole election either (a) repair or replace such defective goods at LaCrosse’s cost or or (b) accept the return of such defective goods at the invoice price of such goods for a credit.

THE WARRANTY SET FORTH ABOVE IS THE EXCLUSIVE WARRANTY PROVIDED BY LACROSSE, AND ALL OTHER WARRANTIES, INCLUDING ANY IMPLIED WARRANTIES OR MERCHANTABILITY OR FITNESS FOR A PARTICULAR PURPOSE, ARE EXPRESSLY DISCLAIMED. IN THE EVENT ANY IMPLIED WARRANTY IS NOT HEREBY EFFECTIVELY DISCLAIMED DUE TO OPERATION OF LAW, SUCH IMPLIED WARRANTY IS LIMITED IN DURATION TO THE DURATION OF THE APPLICABLE WARRANTY STATED ABOVE. THE REMEDIES SET FORTH ABOVE ARE THE SOLE AND EXCLUSIVE REMEDIES AVAILABLE HEREUNDER. LACROSSE WILL NOT BE LIABLE FOR ANY INCIDENTAL OR CONSEQUENTIAL DAMAGES DIRECTLY OR INDIRECTLY RELATED TO THE SALE, HANDLING OR USE OF THE EQUIPMENT, AND IN ANY EVENT LACROSSE’S LIABILITY IN CONNECTION With THE EQUIPMENT, INCLUDING FOR CLAIMS BASED ON NEGLIGENCE OR STRICT LIABILITY, IS LIMITED TO THE PURCHASE PRICE THEREFORE.



Serving up quality underbar equipment and easy installation

QUALITY EQUIPMENT



304 Stainless Steel Construction



NSF Approved



Low Lead Compliant Faucets



Soldered and Siliconed Seams



Cross Brace Leg Construction with Adjustable Feet



Handcrafted by Skilled Workers

Customize to fit any space. Contact the factory for a quote.



EASY INSTALLATION

LaCrosse makes things easy every step of the way, cutting down on installation time and cost. Our products arrive almost fully assembled, and are ready to use in three easy steps.

1



Unbox and install legs & faucets.

2



Place, level & plumb.

3



Secure & seal.

It's as easy as that!

General Information

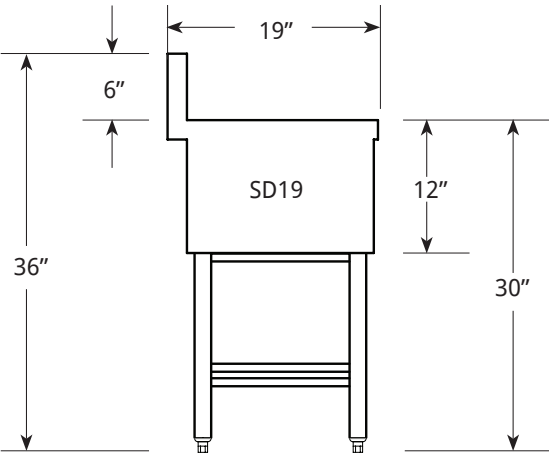
Three distinct family groups:

The end view drawings provide general overall dimensional information. Further details are available from published specification sheets or can be obtained from the factory.

SD19

Features:

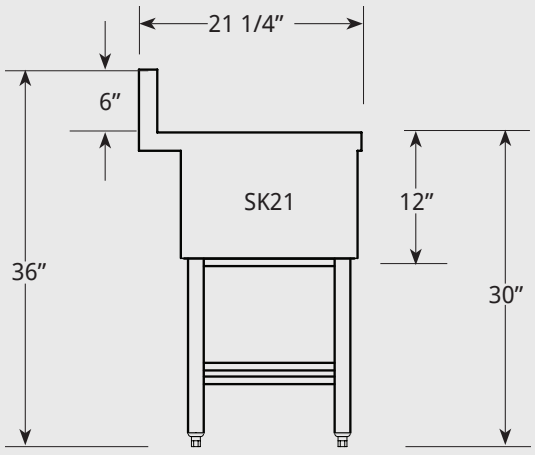
- 19" Front to Back with a 6" High Backsplash.
- 304 Stainless Steel Front Aprons and Ends
- Painted Galvanized Legs
- Splash Mount Faucet
- 1 3/4" Backsplash Allows for Plumbing Clearance



SK21

Features:

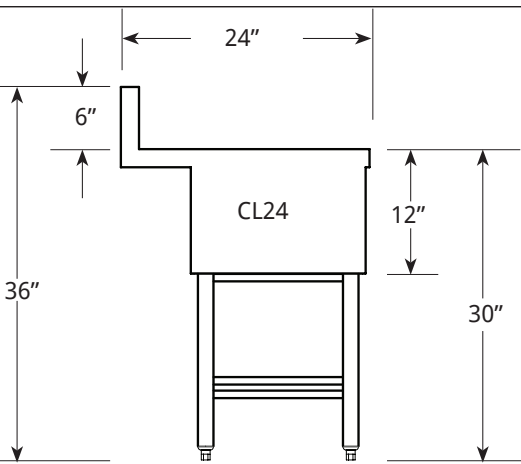
- 21 1/4" Front to Back with a 6" High Backsplash.
- 304 Stainless Steel Front Aprons and Ends
- Painted Galvanized Legs
- Splash Mount Faucet
- 1 3/4" Backsplash Allows for Plumbing Clearance



CL24

Features:

- 24" Front to Back with a 6" High Backsplash.
- 304 Stainless Steel Front Aprons and Ends
- 304 Stainless Steel Legs
- Deck Mount Faucet
- 1 3/4" Backsplash Allows for Plumbing Clearance





USING THIS REFERENCE GUIDE

Once you have determined the length required, go to the table and select the family group (SD, SK or CL). Then determine complete model number.

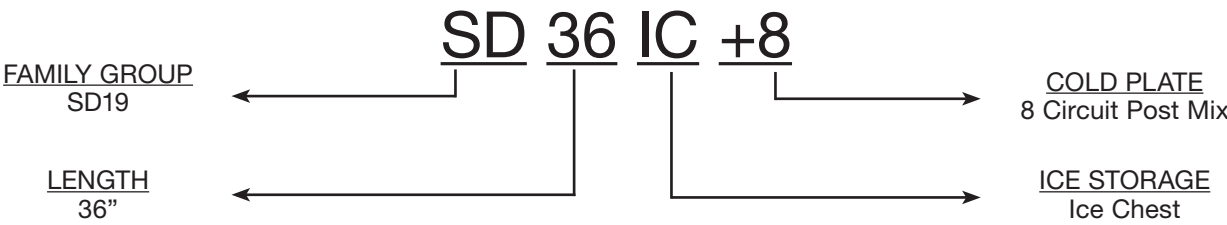
Example:

Description	Unit Length	Weight	SD19	SK21
Ice Chests:	6'	35 lbs.	SD6IC	
	12"	40 lbs.	SD12IC	
	18"	45 lbs.	SD18IC	
	24"	50 lbs.	SD24IC	SK24IC
	30"	55 lbs.	SD30IC	SK30IC
	36"	60 lbs.	SD36IC	SK36IC

Lacrosse model numbers

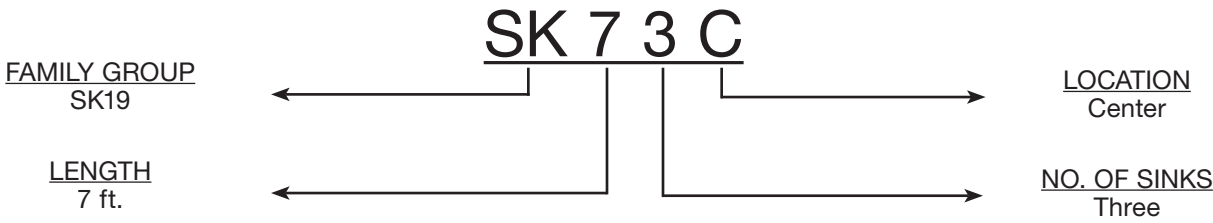
Underbar Sinks, Deli Units and Drop-In Sinks are indicated in feet when referring to length.

Example:



Mixing Stations are indicated in feet and inches. Ice Chests, Cold Plates, Drainboards, Pass Thrus, Cabinets, Add-Ons, Glass and Liquor Storage Racks and Speedrails are indicated in inches.

Example:



LEAD TIME

STANDARD 10 BUSINESS DAY LEAD TIME



Need product quicker?
Ask about our Quick Ship program for catalog items!
Don't miss a date!

ICE CHESTS



Standard Features:

- Includes Stainless Steel Sliding Cover
- 11" Deep Ice Bin
- 12" Front Apron with 18" Legs

Options:

- Bottle Storage Tray
- Backsplash Cutout Options Available. Contact Factory for a Quote.
- 14" Extra Deep Ice Bin

Product Details:

- 6" Unit Designed to Attach to Adjacent Units (No Legs)
- 18" Only Available with 4 Circuit Cold Plate
- 24"-48" Available with 8 or 10 Circuit Cold Plate
- Units with Sealed-in Cold Plates have 15" Front Aprons and Utilize Shorter (15") Leg Assemblies to Maintain Standard Overall Heights

Description	Length	Weight	SD19	SK21
Ice Chests:	6'	35 lbs.	SD6IC	
	12"	40 lbs.	SD12IC	
	18"	45 lbs.	SD18IC	
	24"	50 lbs.	SD24IC	SK24IC
	30"	55 lbs.	SD30IC	SK30IC
	36"	60 lbs.	SD36IC	SK36IC
Cold Plates	48"	65 lbs.	SD48IC	SK48IC
	18"	35 lbs.	4 Circuit Cold Plate	
	24"-48"	45 lbs.	8 Circuit Cold Plate	
	24"-48"	45 lbs.	10 Circuit Cold Plate	

Accessories:

- Bottle Tray
L130-12002
- Ice Chest Divider
L240-10024 Std.
L240-112813A Extra Deep
- Stainless Steel Legs (Upcharge)
L400-99C15-S - 15" Height
L400-99S18-S - 18" Height
- 14" Deep Ice Bin (Upcharge)
24" Bin
30" Bin
36" Bin
48" Bin

ICE CHEST WITH BOTTLE WELLS



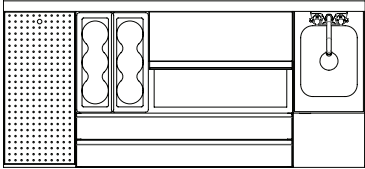
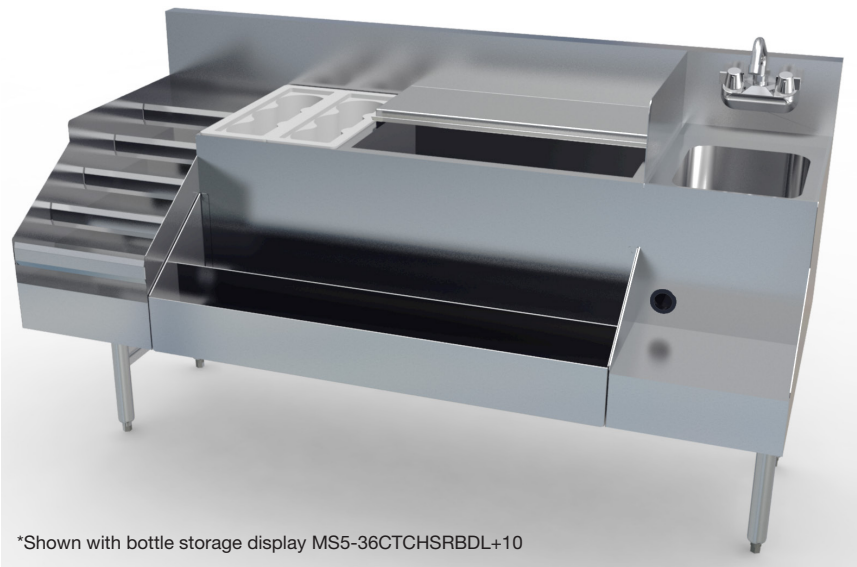
Standard Features:

- Includes Stainless Steel Sliding Cover
- 24" or 30" Ice Chest
- 10 Circuit Cold Plate
- 12" Insulated Side Bin
- Bottle Storage Trays (2)
- 15" Front Apron with 15" Legs

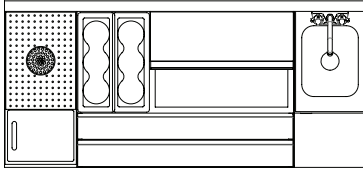
Description	Length	Weight	Model
Ice Chests with Bottle Wells:	36"	110 lbs.	SD36-24CT (L,R) +10
	42"	120 lbs.	SD42-30CT (L,R)+10
	48"	130 lbs.	SD48-24CTC+10



MIXING STATIONS



MS5-36CTCHSRGRL Perforated Drain Board



MS5-36CTCHSRDPL GLASS RINSER/CUTTING BOARD

Description	Length	Weight	Model
Mixing Station	60"	180 lbs.	MS5-36CTCHSRBDL+10
	60"	180 lbs.	MS5-36CTCHSRGRL+10
	60"	180 lbs.	MS5-36CTCHSRDPL+10

Standard Features:

- Includes Stainless Steel Sliding Cover
- 11" Deep Ice Bin
- 28" Front of Rail to Back
- 15" Front Apron with 15" Legs
- Low Lead Compliant Faucet
- 24" Ice Chest
- 10 Circuit Cold Plate
- 12" Insulated Bin for Bottle Storage
- Bottle Storage Trays (2)
- 12" Handsink with 9 3/4" Deep Sink Bowl
- 12"x9" Blender Shelf
- 6" Splash Guard

Options - Choose from:

- 12" Bottle Storage Display (Shown on Left)
- 12" Perforated Drainboard
- 12" Glass Rinser/Cutting Board Combo

Accessories:

5 Compartment Condiment Tray
L500-10564

Stainless Steel Legs (Upcharge)
L400-99C15-S - 15" Height

ICE CHEST STATION WITH BUILT-IN BLENDER SHELF

Standard Features:

- Includes Stainless Steel Sliding Cover
- 11" Deep Ice Bin
- 21" Front to Back
- 15" Front Apron with 15" Legs
- 24" Ice Chest
- 12"x9" Built-In Blender Shelf
- 10 Circuit Cold Plate

Optional:

- Perforated Basket



Description	Length	Weight	Model
Ice Chest Blender Station Combo	48"	125 lbs.	SK4-24ICLBHSR+10
	48"	125 lbs.	SK4-24ICRBHSL+10

Accessories:

Stainless Steel Legs
L400-99C15-S - 15" Height

Perforated Basket
L500-11963

MIXING STATIONS CONTINUED



Standard Features:

- 304 Stainless Steel Welded and Polished Top Assembly, Front and Ends
- 24" Front of Rail to Back
- 15" Front Apron
- Ice Chest with Built-In 10 Circuit Cold Plate
- Separate Insulated Side Bins with Bottle Trays (2)
- Soda Line Chase Provided Behind Each Side Bin
- Includes 304 Stainless Steel 24" Keyhole Speedrail and Sliding Cover
- Cabinet Base with Locking Door
- Die-Cast Heavy Duty 6" Stainless Steel Equipment Legs with Adjustable Feet

Accessories:

36" Front Speedrail
L500-98036

Description	Length	Weight	Model
Cockpit Mixing Station	36"	150 lbs.	MS36-24CTC+10

MIXING STATION CABINET

Standard Features:

- 24" Front to Back
- 6" Deep Sink Bowl
- Low Lead Compliant Faucet
- Glass Rinser with Perforated Pan
- High-Density, Non Porous Surface (NSF)
- Dipperwell
- Locking Cabinet Door
- 6" Stainless Steel Equipment Legs
- 1 1/2" Drain



Description	Length	Weight	Model
Mixing Station	24"	80 lbs.	MS2-HSGR

PASS-THRUS AND OVERSHELVES



- Standard Features:**
- Includes 3 pc. Stainless Steel Sliding Cover
 - 11” Deep Ice Bin
 - 42” Front to Back
 - Cold Plate Units have 15” Front Apron and Sides
 - 44” and 72” Combo Units Include Dual Handsink with Low Lead Compliant Faucets
 - 6” Splash Guard Between Sink and Ice Bin
 - 8 Circuit Cold Plate (+8)
- Options:**
- Upgrade from an 8 Circuit Cold Plate (+8) to a 10 Circuit Cold Plate (+10) for Minimal Upcharge
 - Blender Shelf
 - Speedrails
 - Skirting to Hide Leg Assembly

Description	Length	Weight	Model
Pass-Thru Bin	36”x24”	60 lbs.	PT36
		110 lbs.	PT36+8
Combo Pass-Thru	44”x42”	350 lbs.	PT44HSR1CL+8
	72”x42”	500 lbs.	PT72HSC1CRL+8
Cold Plate		10 Circuit Cold Plate Upcharge	

PASS-THRU OVERSHELVES

- Standard Features:**
- 304 Stainless Steel & 1” Square Tube Construction
 - 42” Height on Single Overshelf
 - 22” Wide Shelf
 - Removable Perforated Pan Inserts
 - Comes with Drain and 8 Foot Drain Tube
 - Designed to Bolt to Floor
- Options:**
- Single Overshelves Designed to be Attached to the End of a Bar. For a Full Length Leg that can be Mounted to the Floor, Note as “Full”. Contact Factory.
 - Stainless Steel Solid End Panel to Attach to Square Tube. Contact Factory.
 - Custom Sizes Available. Contact Factory.



Description	Length	Weight	Model
Single Overshelf*	74”	90 lbs.	SS74
	101”	115 lbs.	SS101
	104”	125 lbs.	SS104
Double Overshelf	46”	100 lbs.	DS46

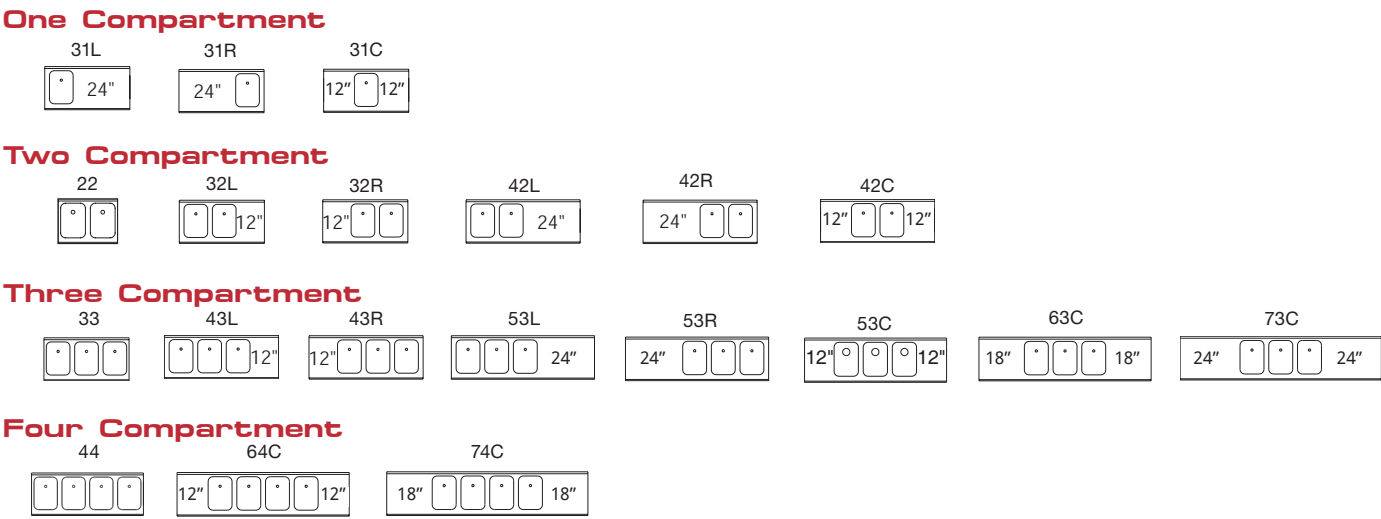
SINKS



- Standard Features:**
- Deep-Drawn Sink Bowls 10”x14”x9 3/4”
 - Includes Low Lead Compliant Faucets
 - 304 Stainless Steel Front Apron and Ends
 - 30” Working Height
 - 1 1/2” Drain with Overflow Tubes
 - Specify Left, Right, or Center with Model when Ordering (ie. SD53C)
- Options:**
- 36” Working Height Available on Select Models (*) with 3” Drain

- Accessories:**
- 36” Working Height (Upcharge)
L400-99D24-S
 - Stainless Steel Legs (Upcharge)
L400-99S18-S
 - Perforated Basket
L500-11963

Description	Length	Weight	SD19	SK21
One Compartment	3 ft.	50 lbs.	SD31 (L,R,C)	SK31 (L,R,C)
Two Compartment	2 ft.	50 lbs.	SD22	SK22
One Faucet	3 ft.	55 lbs.	SD32 (L,R)	SK32 (L,R)
	4 ft.	60lbs.	SD42 (L,R,C)	SK42 (L,R,C)
	3 ft.	55 lbs.	SD33	
Three Compartment	4 ft.	65 lbs.	SD43 (L,R)	SK43 (L,R)
	5 ft.	70 lbs.	SD53 (L,R,C)*	SK53 (L,R,C)
	6 ft.	80 lbs.	SD63 (L,R,C)*	SK63 (L,R,C)
Four Compartment	7 ft.	85 lbs.	SD73 (L,R,C)	
	4 ft.	65 lbs.	SD44	SK44
Faucets	6 ft.	85 lbs.	SD64 (L,R,C)*	SK64 (L,R,C)
	7 ft.	90 lbs.	SD74 (L,R,C)*	SK74 (L,R,C)



CABINETS

STORAGE CABINETS



- Standard Features:**
- 304 Stainless Steel Cabinet
 - Removable Perforated Pan Top with Drain
 - Locking Cabinet Door
 - 6” Stainless Steel Equipment Legs
 - Plumbing Access Holes Provided
- Options:**
- Set of (4) 5” Casters
(Replaces 6” Legs, Two Rigid and Two Swivel - Factory Installed)
 - Removable Adjustable Shelf

Accessories:
Set of 4 Casters
L550-112814

Removable Shelf
L400-12071-18
L400-12071-24
L400-12071-36

Description	Length	Weight	Model
Cabinet	18”	60 lbs.	CLP-CAB18
	24”	70 lbs.	CLP-CAB24
	36”	80 lbs.	CLP-CAB36

CHEMICAL STATION

- Standard Features:**
- 304 Stainless Cabinet with Open Front
 - 6” Deep Removable Chemical Pan with Handle
 - 10”x12”x6” Deep Sink Bowl
 - Low Lead Compliant Faucets
 - Removable Shelf for Storage (24” Only)
 - 6” Stainless Steel Equipment Legs
 - Recessed Top



Description	Length	Weight	Model
Chemical Station	12”	40 lbs.	CL12HS-CS
	24”	65 lbs.	CL24GR-CS

POINT OF SALE STATION



- Standard Features:**
- 304 Stainless Steel Cabinet
 - Locking Louvered Door for Ventilation
 - 1 1/2” Grommet on Top for Cords
 - 11” Splash Guards on Left and Right
 - 6” Stainless Steel Equipment Legs
 - Open Area on Back of Unit to Run Cords

Description	Length	Weight	Model
Point of Sale	18”	70 lbs.	CL18POS
	24”	80 lbs.	CL24POS

GLASS RACKS



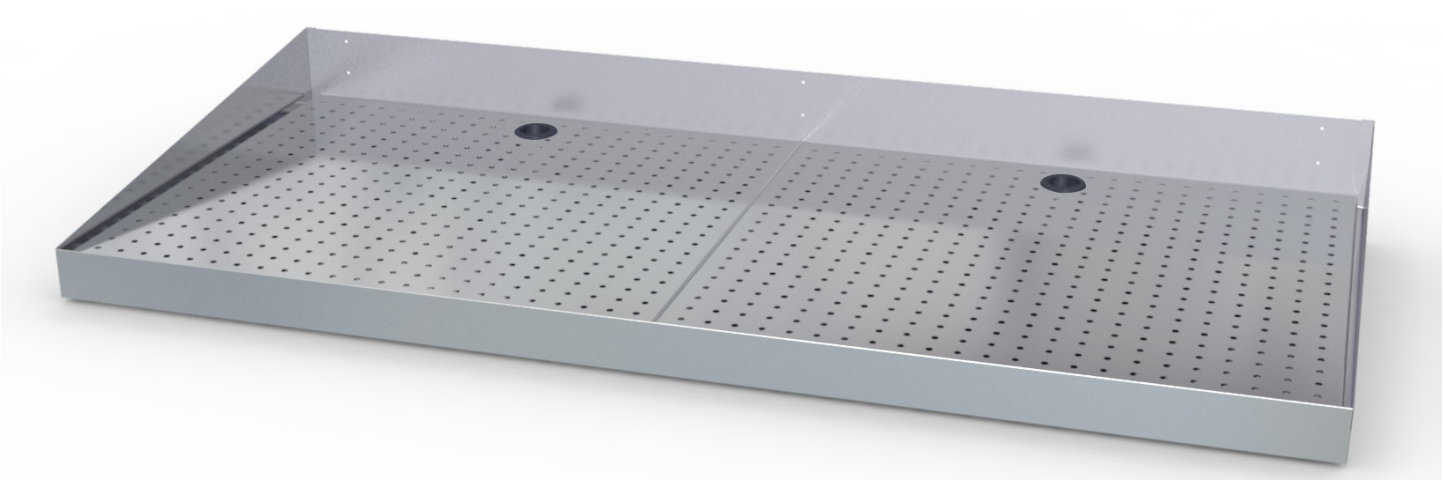
- Standard Features:**
- 304 Stainless Steel Cabinet
 - Removable Perforated Pan Top with Drain
 - Standard with Slide Rails
 - Holds 3 Glass Racks
 - 6” Stainless Steel Equipment Legs
- Options:**
- Locking Cabinet Doors
 - Set of (4) 5” Casters
(Replaces Legs Two Rigid and Two Swivel - Factory Installed)
 - Removable Shelves

Accessories:
Locking Cabinet Door
Set of 4 Casters
L550-112814

Removable Shelf
L400-12071-12
L400-12071-18
L400-12071-24
L400-12071-36

Description	Length	Weight	SK21	CL24
Smooth Top	24”	70 lbs.	SK24GR	CL24GR
with Perforated Pan	12”	50 lbs.		CL12GR-DB
	18”	60 lbs.		CL18GR-DB
	24”	70 lbs.	SK24GR-DB	CL24GR-DB

DRYING RACK



- Standard Features:**
- Counter Top Drying Pan
 - Removable Perforated Pan with Drain
 - 5” Backsplash

Description	Length	Weight	Model
Counter Drying Pan	24”	30 lbs.	SKP24
	42”	35 lbs.	SKP42
	48”	40 lbs.	SKP48



BOTTLE STORAGE

BOTTLE STORAGE ON 15" LEGS



Standard Features:

- 304 Stainless Steel
- Five Descending Storage Steps
- Splash Guards on Left and Right
- Built-In Step Straps Included with Unit
- 15" Stainless Steel Equipment Legs with Adjustable Feet

Description	Length	Weight	Model
Bottle Display with 15" Legs	12"	30 lbs.	CL12BSD-C15-S
	18"	40 lbs.	CL18BSD-C15-S
	24"	50 lbs.	CL24BSD-C15-S

BOTTLE STORAGE ON 6" LEGS

Standard Features:

- 304 Stainless Steel
- 5 Descending Storage Steps
- Splash Guards on Left and Right
- Built-In Step Straps Included in Unit
- 6" Stainless Steel Equipment Legs

Options:

- Set of (4) 5" Casters (Replaces 6" Legs, Two Rigid and Two Swivel - Factory Installed)
- Locking Cover (Factory Installed)

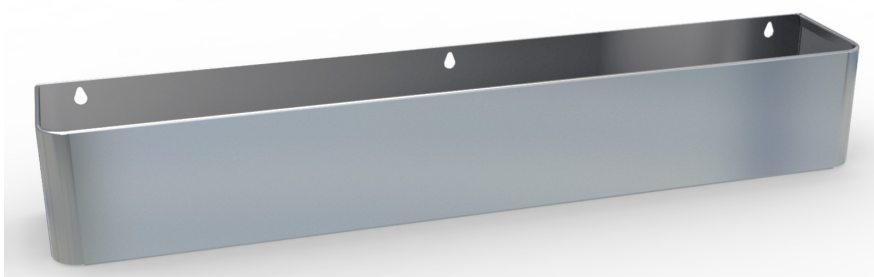


Accessories:
Set of 4 Casters
L550-112814

Description	Length	Weight	SK24	CL24
Bottle Storage Display	24"	60 lbs.	SK24BSD	CL24BSD

BOTTLE STORAGE CONTINUED

SPEEDRAILS - KEYHOLE



Standard Features:

- Fastening Hardware Included for Field Installation
- Support Braces Standard for 48", 60", and 72" Double Keyhole Models

Description	Length	Weight	Single Speed Rail	Weight	Double Speedrail
Single Speedrail	18"	3 lbs.	L500-98018		
	24"	4 lbs.	L500-98024	8 lbs.	L500-98024-2
	30"	5 lbs.	L500-98030	10 lbs.	L500-98030-2
	36"	6 lbs.	L500-98036	12 lbs.	L500-98036-2
	48"	8 lbs.	L500-98048	16 lbs.	L500-98048-2
	60"	10 lbs.	L500-98060	20 lbs.	L500-98060-2
	72"	12 lbs.	L500-98072	24 lbs.	L500-98072-2
Drainboard Hanging Brackets		2 lbs.	L500-98BR1		
Ice Chest Hanging Brackets		2 lbs.	L500-98BR2		

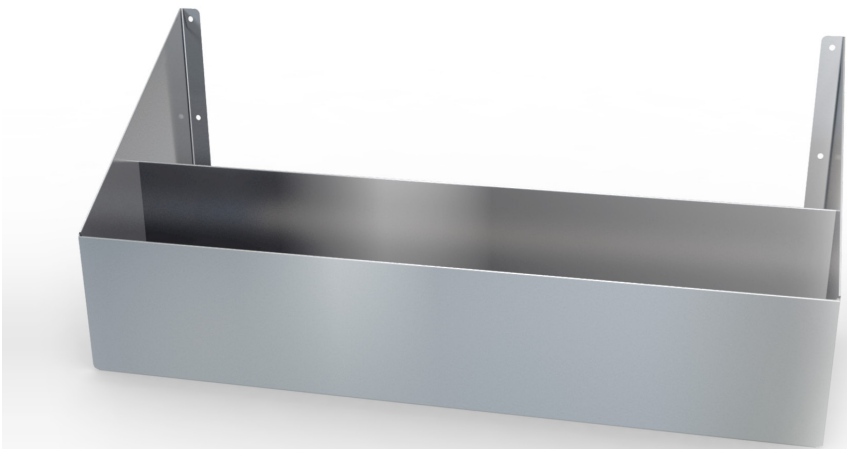
SPEEDRAILS - GUSSETED

Standard Features:

- Sound Dampening Plastic Rail Liner
- Fastening Hardware Included for Field Installation
- Support Braces Standard for 48", 60", and 72" Models

Options:

- 24", 30", and 36" Available with Locking Covers (Designated with the * Below)
- Custom Lengths Available



Accessories:
Locking Cover "-LC" (Single)
24"
30"
36"
Locking Cover "-LC" (Double)
24"
30"
36"

Description	Length	Wt.	Single Speed Rail	Wt.	Double Speedrail
Single Speedrail	18"	3 lbs.	L500-18 GSR	7 lbs.	L500-18 GSR-2
	24"	4 lbs.	L500-24 GSR*	8 lbs.	L500-24 GSR-2*
	30"	5 lbs.	L500-30 GSR*	9 lbs.	L500-30 GSR-2*
	36"	6 lbs.	L500-36 GSR*	10 lbs.	L500-36 GSR-2*
	42"	7 lbs.	L500-42 GSR	11 lbs.	L500-42 GSR-2
	44"	8 lbs.	L500-44 GSR	12 lbs.	L500-44 GSR-2
	48"	9 lbs.	L500-48 GSR	13 lbs.	L500-48 GSR-2
	60"	10 lbs.	L500-60 GSR	16 lbs.	L500-60 GSR-2
Support Brace	72"	12 lbs.	L500-72 GSR	19 lbs.	L500-72 GSR-2
		2 lbs.	L420-12001	2 lbs.	L420-11038



BEER STORAGE



- Standard Features:**
- False Bottom
 - Removable Perforated Pans
 - Includes Ice Bin Cover
 - 6” Stainless Steel Equipment Legs
- Options**
- Set of (4) 5” Casters
(Replaces 6” Legs, Two Rigid and Two Swivel
- Factory Installed)

Description	Height	Weight	Model
Beer Bin	19”	40 lbs.	CL-24ICCAB-19
	31”	55 lbs	CL-24ICCAB-31

Accessories:
Set of 4 Casters
L550-112814

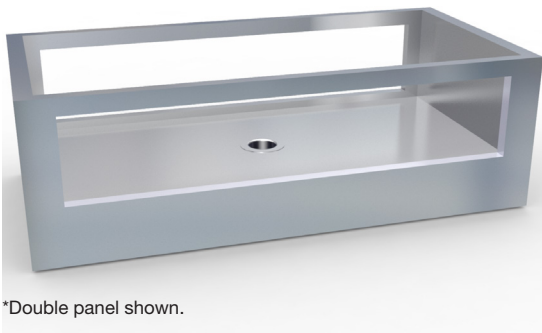
TROUGH

- Standard Features:**
- 24” Front to Back
 - Includes Stainless Steel Sliding Covers (2)
 - 18” Deep Ice Chest Trough
 - 30” Working Height



Description	Length	Weight	Model
Trough	48”	150 lbs.	BB48
	60”	175 lbs.	BB60

GLASS MERCHANDISER

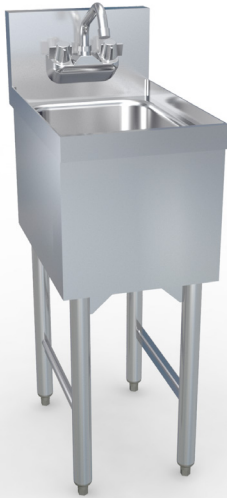


- Standard Features:**
- 304 Stainless Steel
 - One or Two Sided - Double Pane Glass Panels with Stainless Steel Trim
 - Built in Petcock Valve Drain
 - Includes 3 ft. of Clear Plastic Drain Tubing

Description	Length	Weight	Model
Single Panel	24”	30 lbs.	MDG24
	30”	35 lbs.	MDG30
	36”	40 lbs.	MDG36
	48”	45 lbs.	MDG48
Double Panel	24”	40 lbs.	MDG24-2
	30”	45 lbs.	MDG30-2
	36”	50 lbs.	MDG36-2
	48”	55 lbs.	MDG48-2

ADD-ONS

STANDARD HANDSINK



- Standard Features:**
- 304 Stainless Steel
 - Deep-Drawn Sink Bowl
10”x14”x9 3/4”
 - Low Lead Compliant Faucet
 - Recessed Top Tray
- Options**
- Sidesplash to Mount to Right or
Left of the Unit

- Accessories:**
Stainless Steel Legs (Upcharge)
L400-99S18-S 18” Height
- Perforated Basket
L500-11963
- Side Splash
L240-112815 (L, R)
- Blender Shelf
L500-10558
- Towel Dispenser
L130-11425
- Soap Dispenser
L130-11192

Description	Length	Weight	SD19	SK21
Handsink	12”	35 lbs.	SD12HS	SK12HS
	18”	40 lbs.	SD18HS	

HANDSINK WITH BUILT IN SOAP AND TOWEL DISPENSER

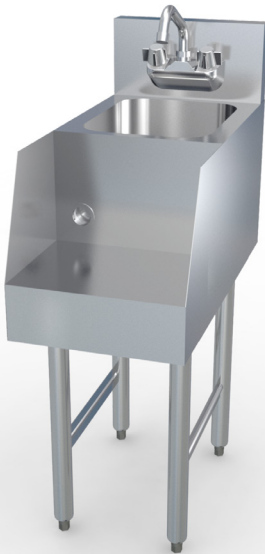
- Standard Features:**
- 304 Stainless Steel
 - Deep-Drawn Sink Bowl
10”x14”x9 3/4”
 - Low Lead Compliant Faucet
 - Recessed Top Tray
 - Built-In Soap Dispenser
 - Built-In C-Towel Dispenser
 - 304 Stainless Steel Legs

- Accessories:**
Perforated Basket
L500-11963
- Side Splash
L240-112815 (L, R)



Description	Length	Wt.	Model
with Built-In Soap and Towel Dispenser	12”	40 lbs.	CL12HS-ST

HANDSINK WITH BLENDER SHELF



- Standard Features:**
- 304 Stainless Steel
 - Deep-Drawn Sink Bowl
10”x12”x6”
 - Low Lead Compliant Faucet
 - Recessed Top Tray
 - Built-In 12”x9” Blender Shelf
 - Electric Outlet Cutout Provided

- Accessories:**
Stainless Steel Legs (Upcharge)
L400-99S18-S 18” Height
- Perforated Basket
L500-11963
- Side Splash
L240-112815 (L, R)

Description	Length	Weight	SK21	CL24
	12”	40 lbs.		CL12RSCH
	18”	45 lbs.	SK18RSCH	

ADD-ONS CONTINUED

HANDSINK DUMP SINK COMBO



Standard Features:

- 304 Stainless Steel
- Deep-Drawn Sink Bowls 10"x14"x9 3/4"
- Low Lead Compliant Faucets
- Recessed Top Tray
- 12" Drainboard
- 7" Splash Guard
- 3" Strainer Basket Drain

Options:

- Skirting to Hide Leg Assembly

Accessories:

Stainless Steel Legs (Upcharge)
L400-99S18-S 18" Height

Perforated Basket
L500-11963

Description	Length	Weight	Model
Handsink Combo	36"	80 lbs.	SK3-HS21 (L,R)
Skirt	36"	20 lbs.	L500-11887

HANDSINK WITH TRASH RECEPTACLE

Standard Features:

- 304 Stainless Steel
- Deep-Drawn Sink Bowls 10"x14"x9 3/4"
- Low Lead Compliant Faucet
- Recessed Top Tray
- 6"x4" Trash Hole
- 6" Stainless Steel Equipment Legs
- Locking Cabinet Door
- Built-In Trash Receptical (*Trash Can Sold Separately)



Description	Length	Weight	Model
Handsink w/ Trash Receptacle	18"	65 lbs.	CL18HS-TRA

TRASH RECEPTACLE



Standard Features:

- 304 Stainless Steel
- Locking Door
- Attaches to Adjacent Units
- 12" Unit Designed to Attach to One Adjacent Units (No Legs).
- 14" Unit Designed to Attach to One Adjacent Unit & Free Standing on the Other (One 18" Leg). Specify Right or Left.
- Includes Sliding Trash Cover

Description	Length	Weight	Model
Trash Receptacle	12"	25 lbs.	CL12TRA
	14"	30 lbs.	CL14TRA (L,R)

*Shown with optional sliding cover.

ADD-ONS CONTINUED

BEER DRAINER



Standard Features:

- 304 Stainless Steel
- Removable Perforated Pan with Drain
- Built-In Chase for Beer Dispensing Tower
- 11" Front Apron
- 15" Stainless Steel Legs

Description	Length	Weight	SD19	CL24
Beer Drainer	24"	45 lbs.	SDP24-BD	CLP24-BD

EQUIPMENT STAND

Standard Features:

- 304 Stainless Steel
- 18" Backsplash with 3/4" Turnback
- Recessed Top Tray with Built-In Drain
- Open Cabinet Base
- 6" Stainless Steel Equipment Legs



Description	Length	Weight	Model
Equipment Stand	18"	40 lbs.	CL18ES
	24"	50 lbs.	CL24ES

DRAINBOARDS AND DRINK RAILS

DRAINBOARDS



*CLW24 Removable pan CL unit shown.

Description	Length	Weight	SD19	CL24
Drain Board	12"	25 lbs.	SDW12	CLW12
	18"	30 lbs.	SDW18	CLW18
	24"	35 lbs.	SDW24	CLW24
	36"	45 lbs.	SDW36	CLW36

Standard Features:

- 304 Stainless Steel
- Drain can be Located in Either End, but will be Mounted Left Unless Otherwise Indicated

SD19 Units:

- Standard Corrugated Drainboard Top with Drain
- Galvanized Legs

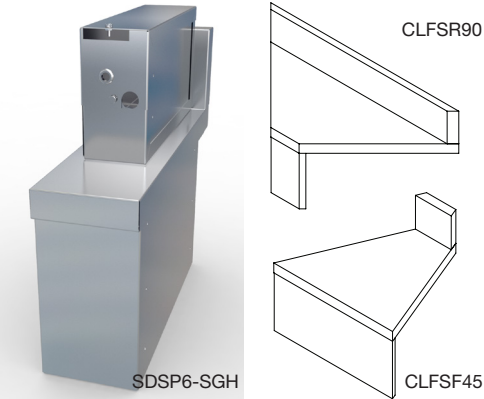
CL Units:

- Removable Perforated Pan with Drain
- 304 Stainless Steel Legs

Accessories:

Stainless Steel Legs (Upcharge)
L400-99S18-S 18" Height

FILLERS, CHASES, AND SODA GUN HOLDERS



Standard Features:

- 304 Stainless Steel
- Designed to Attach to Adjacent Units
- Front and Rear Fillers are Available in 45 and 90 Degree Units

Customization available.

Make your filler section more functional by adding in a Perforated Pan, Glass Rinser, or Cutting Board.

Contact Factory for Quote.

Description	Weight	SD19	SK21	CL24
Front	25 lbs.	SDFSF (45, 90)		
Rear	25 lbs.	SDFSR (45, 90)		
Corner	25 lbs.	SDDC90FS		
6" Spacer	15 lbs.	SDSP6	SKSP6	
6" Spacer with Chase	15 lbs.	SDSP6-CH	SKSP6-CH	
6" Soda Gun Holder	25 lbs.	SDSP6-SGH	SKSP6-SGH	CLSP6-SGH

WALL MOUNT HANDSINK

Standard Features:

- 10 5/16"x12 5/8"x4" Deep Sink
- Includes Splash Mount Low Lead Compliant Faucets
- Includes 1 1/2" Drain and Mounting Brackets

Options:

- Side Splash Available

Accessories:

Perforated Basket
L500-11963

Side Splash
L240-112815 (L, R)



Description	Length	Weight	Model
WallMount Handsink	14"	14 lbs.	HS-WMS

CORNER UNIT WITH PERFORATED PAN



Standard Features:

- 304 Stainless Steel
- Corner Filler Unit to Join Two SK21 or CL24 Units
- Removable Perforated Pan with Drain
- 12" Front Apron with 18" Legs

Description	Length	Weight	Model
Corner Filler	24"x24"	40 lbs.	SKDC90

Accessories:

Stainless Steel Legs (Upcharge)
L400-99S18-S 18" Height



DROP-IN ICE CHESTS

DROP-IN ICE CHESTS



Standard Features:

- Includes Stainless Steel Sliding Cover
- 11" Deep Ice Bin
- Bottle Storage Trays Sold Separately

Options:

- 18" Available with 4 Circuit Cold Plate
- 24"-36" Available with 8 or 10 Circuit Cold Plate
- 14" Deep Bins Available

NOTE: 12" Not Available with Cold Plate

Accessories:

Cold Plate Options:
4 Circuit Cold Plate
8 Circuit Cold Plate
10 Circuit Cold Plate

14" Deep Option:
24"
30"
36"

Bottle Tray
L130-12002

Description	Length	Weight	Model
Drop-In Ice Chest	12"	25 lbs.	DI12IC
	18"	30 lbs.	DI18IC
	24"	35 lbs.	DI24IC
	30"	40 lbs.	DI30IC
	36"	45 lbs.	DI36IC

DROP-IN WATER STATION

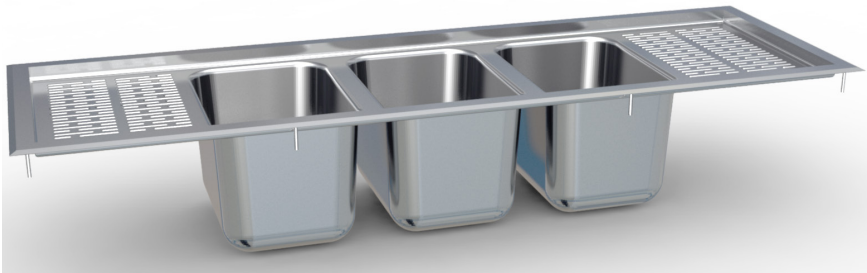
Standard Features:

- 10"x6"x6" Sink with 1 1/2" Drain
- 12"x12" Insulated Ice Bin Holds 30 lbs. of Ice
- Removable Anti-Splash Grid
- Pushback Low Lead Faucet



Description	Weight	Model
Drop-In Bin w/Waterstation	35 lbs.	DI-WS-IB

DROP-IN SINKS



Standard Features:

- 304 Stainless Steel
- 3" Strainer Basket Drain with Strainer Basket
- Bowl Size 10"x14"x9 3/4"
- Low Lead Faucet to Counter Mount

Description	Length	Weight	Model
Drop-In Sink	4 ft.	40 lbs.	DI43CD
	5 ft.	40 lbs.	DI53CD

Accessories:

3" Deck for Faucet

DROP-IN CONCESSION SINK

Standard Features:

- Includes Deck Mount Low Lead Faucet
- Bowl Size is 6"x12"x6" Deep
- 3" Drains with Strainer Baskets

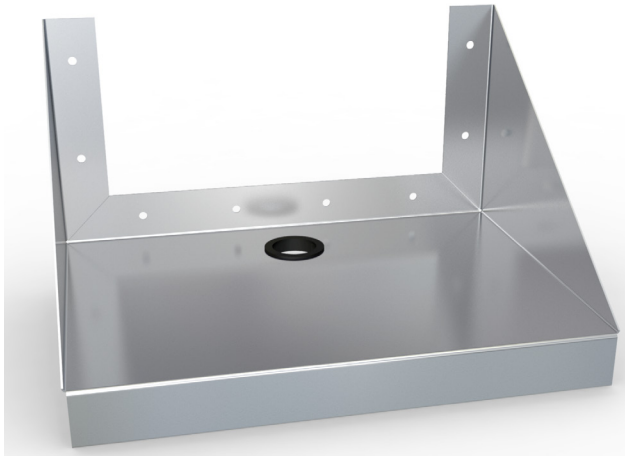
Options:

- Gooseneck Low Lead Faucet



Description	Length	Weight	Model
Concession Sink	24 3/8"	20 lbs.	CS3DI

SHELVES



Standard Features:

- 304 Stainless Steel Construction
- Grommet Hole for Cord

Description	Length	Weight	Model
POS Shelf	14"	10 lbs.	KS14M
Microwave Shelf	24"	15 lbs.	KS24M





THE STOWAWAY® PORTABLE BAR



STORAGE VIEW



OPEN VIEW

Standard Features:

- Vinyl Clad Aluminum Exterior
- 24" Ice Bin Includes Cover
- Stores On End in a 2ft Space
- Heavy Duty Casters
- Lockable Cabinet Latches
- 304 Stainless Steel Work Surface
- Storage Bumpers
- Perimeter Trim Bumper
- NSF Approved Ice Bin
- Holds 95 lbs. of Ice
- See StowAway spec sheet for additional information and accessories

Portable Bar		Model
Black	Basic Black	PB5-24IB-TBK
Custom Finish	Carmines Cherry	PB5-24IB-WCC
	Manhattan Walnut	PB5-24IB-WMW
	American Natural	PB5-24IB-WAN
	Russian Maple	PB5-24IB-WRM
	Boston Cherry	PB5-24IB-WBC
	White	PB5-24IB-FFW
Accessories		Model
Storage Cover		L130-11400
Handsink with Reservoir		L500-11686
Condiment Tray	5 Trays	L500-10564

FROM OPEN TO CLOSED



1.



2.

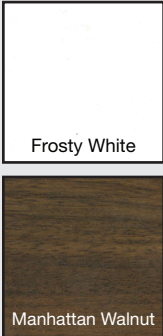


3.



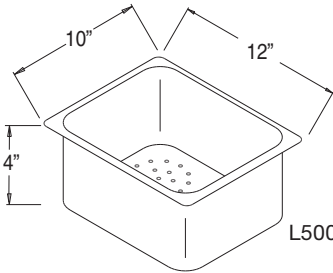
4.

Custom Laminate Colors:

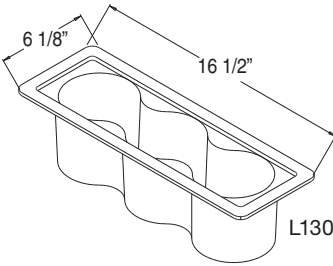


ACCESSORIES

	Part Number	Description	Weight
Low-Lead Faucets:	L130-34D08L	Faucet, Low Lead, 8" Spout, Deck Mount, 4" Centers	3 lbs.
	L130-34GN6L	Faucet for Pass Thrus, Low Lead	3 lbs.
	L130-34D12L	Faucet, Low Lead, 12" Spout, Deck Mount, 4" Centers	3 lbs.
	L130-34GN4L	Faucet, Low Lead, 4" Spout, Deck Mount, 4" Centers	3 lbs.
	L130-34W06L	Faucet, Low Lead, 6" Spout, Wall Mount, 4" Centers	3 lbs.
	L130-34W10L	Faucet, Low Lead, 10" Spout, Wall Mount, 4" Centers	3 lbs.
	L130-34WGN4L	Faucet, Low Lead, Wall Mount 4" Centers	3 lbs.
	L130-30PB1L	Faucet, Low Lead, Push Back, Pedestal Mount, 4" Centers	3 lbs.
	L130-11517	Wrist Handles, Faucet Accessory, Wrist Handles & Cap, Splash or Wall Mount	1 lbs.
Covers	L500-90C36-TB	Cover Sliding, 304 Stainless Steel, 36", Cocktail, Top & Bottom	6 lbs.
	L400-90I18-TB	Cover Sliding, 304 Stainless Steel, 18", IC, Top & Bottom	4 lbs.
	L400-90I24-TB	Cover Sliding, 304 Stainless Steel, 24", IC, Top & Bottom	5 lbs.
	L400-90I30-TB	Cover Sliding, 304 Stainless Steel, 30", IC, Top & Bottom	6 lbs.
	L400-90I36-TB	Cover Sliding, 304 Stainless Steel, 36", IC, Top & Bottom	7 lbs.
	L400-90I48-TB	Cover Sliding, 304 Stainless Steel, 48", IC, Top & Bottom	8 lbs.
	L400-90PT36	Cover Sliding, 304 Stainless Steel, 36", 3-piece, Pass-Thru	13 lbs.
	L400-90PT42	Cover Sliding, 304 Stainless Steel, 42", 3-piece, Pass-Thru	14 lbs.
Legs	L400-99S18	Leg Assy, 18" Standard Height, 1pr. (2-2 Leg Sets)	15 lbs.
	L400-99C15	Leg Assy, 15" Cold Plate Height, 1pr. (2-2 Leg Sets)	19 lbs.
	L400-99S18-S	Leg Assy, 18" 304 Stainless Steel, Standard Height, 1pr. (2-2 Leg Sets)	17 lbs.
	L400-99D24-S	Leg Assy, 24" Stainless, Deli Height, 1pr. (2-2 Leg Sets)	19 lbs.
	L400-99C15-S	Leg Assy, 15" 304 Stainless Steel, Cold Plate Height, 1pr. (2-2 Leg Sets)	21 lbs.
Drains	L130-10546	Drain Assembly 1.5"	2 lbs.
	L500-10547	Drain Assembly 1"	1 lbs.
	L130-10548	Drain Assembly with 3" Strainer Basket	3 lbs.
Trays	L130-12002	Bottle Tray, 3 hole, Bottle Storage Compartment	5 lbs.
	L500-10564	Condiment Tray, 5, with Holder	14 lbs.



L500-11963 Perforated Pan



L130-12002 Bottle Trays

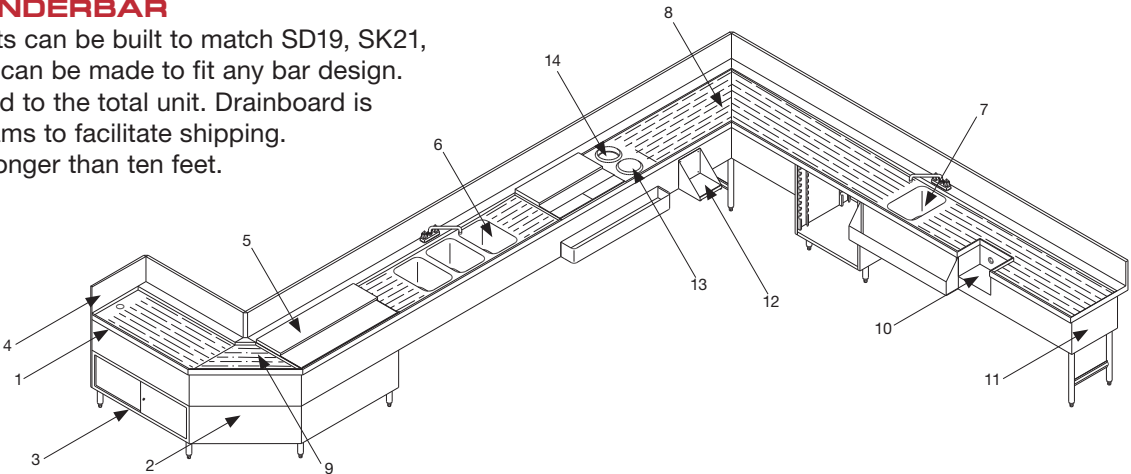
	Part Number	Description	Weight
Sink Accessories	L500-11963	Perforated Basket, 10" x 12" x 6", 304 Stainless Steel, with Adapter	5 lbs.
Vendor Parts	L130-10549	Grommit, for 1" Overflow Tube (Grey)	1 lb.
	L130-10568	Overflow Pipe, 8 1/2", for 1 1/2" Drain	1 lb.
	L130-10545	Overflow Pipe, 10", for 1" Drain	1 lb.
	L130-11277	Stopper, 1 3/4" Rubber	1 lb.
	L130-11425	Folding Towel Dispenser	5 lbs.
	L130-11192	Soap Dispenser	5 lbs.
Miscellaneous	L500-10558	Drop Down Blendershelf - 12" W x 9" D	10 lbs.
	L240-10024	304 Stainless Steel Ice Chest Divider 15" W X 10" D	1 lb.
	L240-112813A	Extra Deep - 304 Stainless Steel Ice Chest Divider 15" W X 14" D	2 lbs.
	L130-12016	Dipper Well, 1 1.5" Drain Assy.	3 lbs.



CUSTOM CONFIGURATIONS

CUSTOM BUILT UNDERBAR

Specifically fabricated units can be built to match SD19, SK21, or CL24 construction and can be made to fit any bar design. Components are integrated to the total unit. Drainboard is divided at appropriate seams to facilitate shipping. Shipped sections are no longer than ten feet.



HOW TO DESIGN YOUR CUSTOM BUILT UNDERBAR

- A. Start by computing the length of each individual workspace by measuring both the front apron and the backsplash (use the longest of the two).
- B. Next determine Underbar series SD19, SK21, or CL24.
- C. Add each construction feature as shown. Spaces left open will be filled with drainboards.
- D. Choose your accessories. All orders must include detailed sketch. We will furnish a final drawing for your approval before beginning fabrication. All orders are subject to final factory approval for pricing accuracy.

Item Number	Description	SD19	SK21	CL24
Start with	Workspace (min. 3 ft.) (per lin. ft.)	<input type="checkbox"/>	<input type="checkbox"/>	<input type="checkbox"/>
	- Space not filled with other items will be Drainboard (1.)			
Accessories				
2.	304 Stainless Steel Removable or Hinged Apron (per lin. ft.)	<input type="checkbox"/>	<input type="checkbox"/>	<input type="checkbox"/>
3.	Workboard Base on 6" Legs (per lin. ft.) Base on Cabinet Pricing	<input type="checkbox"/>	<input type="checkbox"/>	<input type="checkbox"/>
4.	Endsplash (Sidesplash must specify L or R)	<input type="checkbox"/>	<input type="checkbox"/>	<input type="checkbox"/>
5.	Built-In Ice Chest w/Stainless Steel Sliding Cover			
	24"W x 11" Deep	<input type="checkbox"/>	<input type="checkbox"/>	<input type="checkbox"/>
	30"W x 11" Deep	<input type="checkbox"/>	<input type="checkbox"/>	<input type="checkbox"/>
	36"W x 11" Deep	<input type="checkbox"/>	<input type="checkbox"/>	<input type="checkbox"/>
6.	Sinks 10" x 14" x 9 1/2" (ea.)			
	Includes Drain Assy. & Overflow Tube	<input type="checkbox"/>	<input type="checkbox"/>	<input type="checkbox"/>
7.	Waste or Hand Sink w/3" Strainer Basket (ea.)	<input type="checkbox"/>	<input type="checkbox"/>	<input type="checkbox"/>
8.	Stainless Steel End (Included in Item 1)	<input type="checkbox"/>	<input type="checkbox"/>	<input type="checkbox"/>
9. L500-10558	Drop Down Blender Shelf 12"x 9"	<input type="checkbox"/>	<input type="checkbox"/>	<input type="checkbox"/>
10.	6" Waste Chute Installed	<input type="checkbox"/>	<input type="checkbox"/>	<input type="checkbox"/>
11.	6" Waste Container w/Removable Receptacle & Drain Installed	<input type="checkbox"/>	<input type="checkbox"/>	<input type="checkbox"/>
Additions Not Shown				
	Cut Out for Beer & Soda Lines Sleeved Slot (3"x 6")	<input type="checkbox"/>	<input type="checkbox"/>	<input type="checkbox"/>
L240-10024	304 Stainless Steel Ice Chest Divider	<input type="checkbox"/>	<input type="checkbox"/>	<input type="checkbox"/>
L400-99D24-S	Extra Height Legs (36" Working Height) (2 Leg Set) CD	<input type="checkbox"/>	<input type="checkbox"/>	<input type="checkbox"/>
L500-10564	Set of Five Condiment Trays w/Holder	<input type="checkbox"/>	<input type="checkbox"/>	<input type="checkbox"/>
	Perforated Bottom Pan (per lin. ft.)	<input type="checkbox"/>	<input type="checkbox"/>	<input type="checkbox"/>

FACTORY DRAWINGS FOR YOUR APPROVAL

The LaCrosse Design Group can provide factory CAD (Computer Aided Drafting) drawings for customer approval. Email, text, or fax your job sketches/drawings to our business address, "Attn: LaCrosse Sales Department". Please include:

- 1. Equipment list.
- 2. Appropriate dimensions and/or scale of drawing.
- 3. List of required accessories.
- 4. Name and phone number of contact person.
- 5. Date drawing required.

A CAD library is also available upon request at no charge. LaCrosse products are also featured in Autoquotes and KCL.

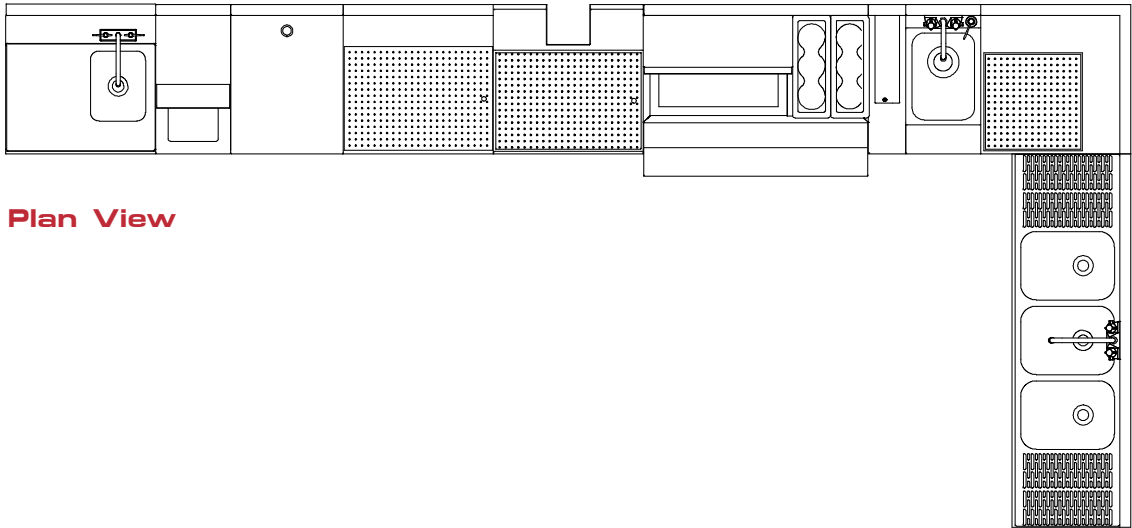
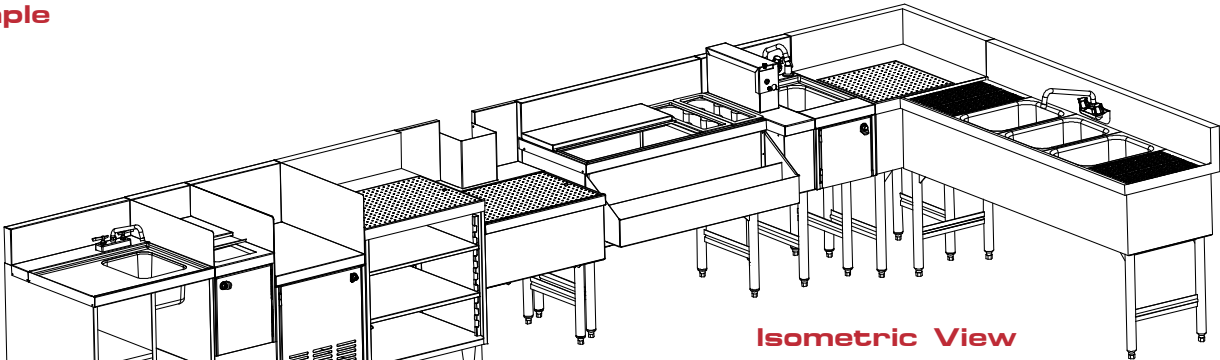
Clearly indicate your requirements:

- Plan View
- Isometric Views of Equipment



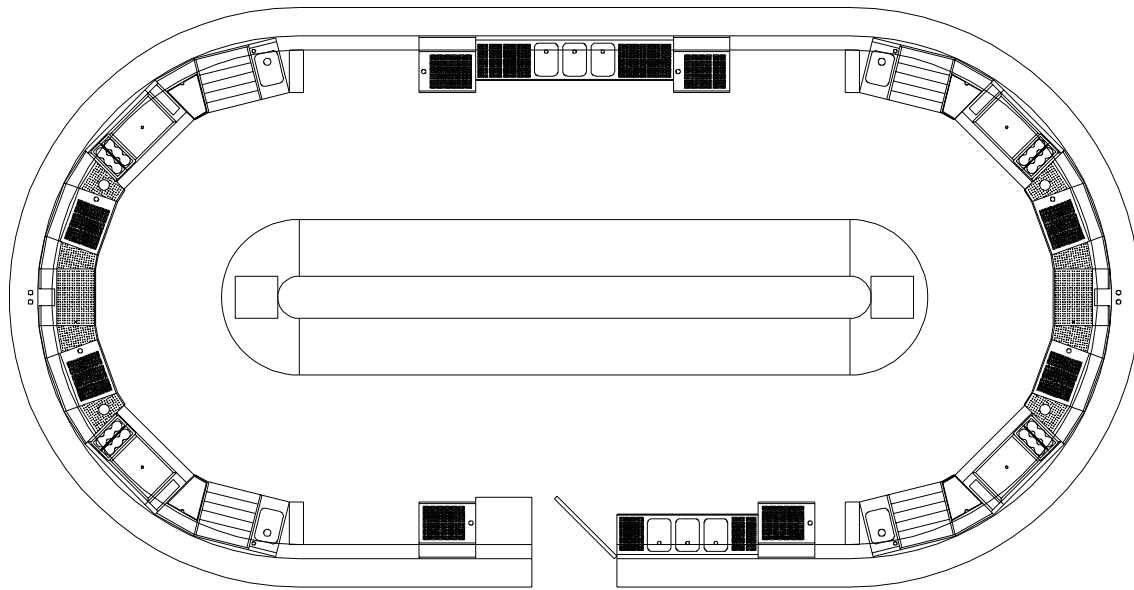
Remember, accurate drawings (formally approved) are the key to satisfied customers.

Example

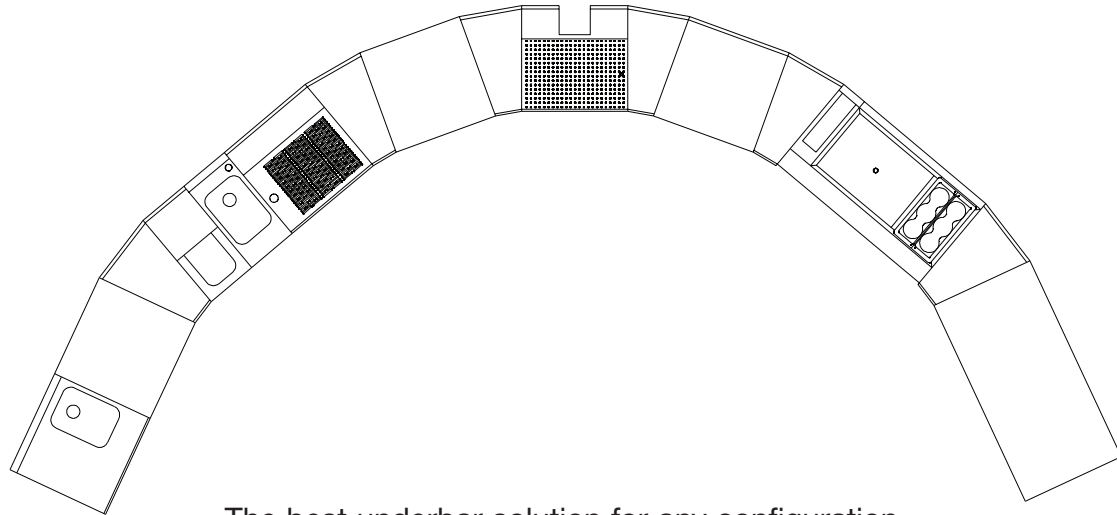




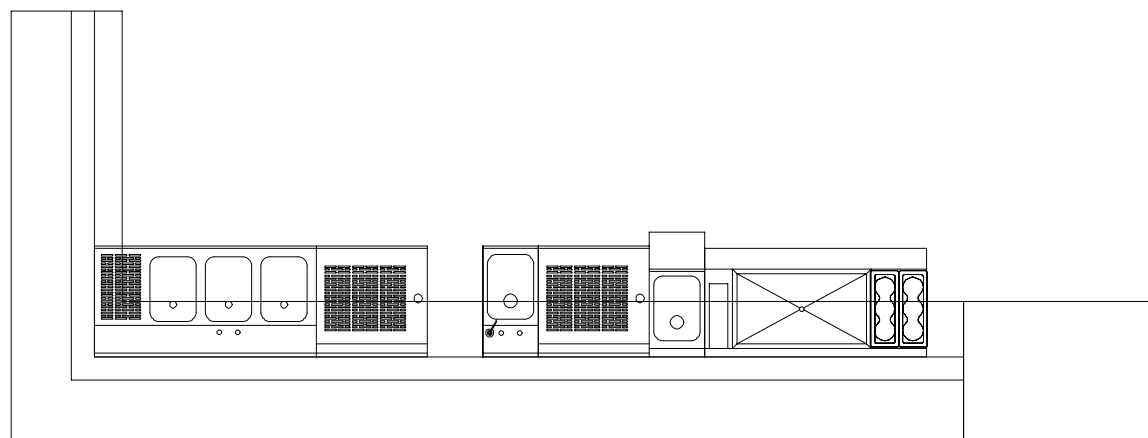
DESIGN YOUR BAR LAYOUT FOR FUNCTIONALITY & INCREASE PROFITABILITY!



48 hour bar layout turnaround with Auto Quote.



The best underbar solution for any configuration.



Keep customers coming back.





LACROSSE

by **PIPER**

Visit www.lacrossecooler.com to discover our complete line of underbar equipment solutions.

300 S. 84th Avenue
Wausau, WI 54401
Phone: 800-544-3057
Fax: 715-842-3125
www.lacrossecooler.com



© 2024 Piper Products, Inc.

LIT 1046